

welcome!

While you walk with your child, read the posters along the path. Have a conversation about the things you notice around you. Come up with new questions and investigate. The more you talk with your child, the more they'll learn! Have fun!

Question.

Reppeat.

Stretch.

Talk some more!

The logo for 'ello' is a teal speech bubble containing the word 'ello' in white lowercase letters.

ello

everyday
language &
literacy
opportunities



predict

What do you notice about the weather today?

What do you predict the weather will be like tonight?

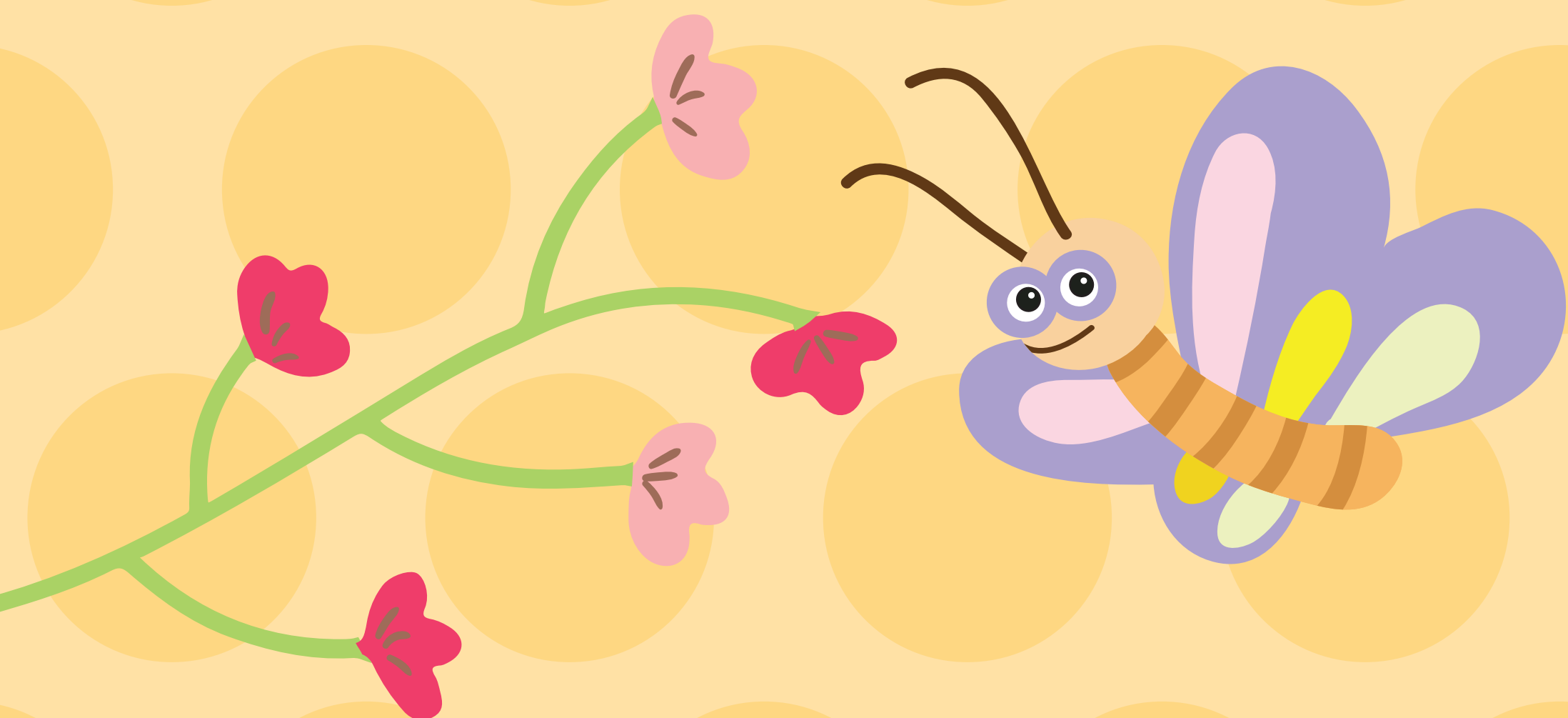


insects

Look for some bugs
around you!



Where did they
come from? Where
are they going?



Where might their
habitats be?

smells

What aromas
can you smell?



Does everything
in the park
smell the same?

Try to smell
different things.



Describe
the smells.

sound

How does it work?

Shhh, listen.
What sounds can
you hear now?

Where are
the sounds
coming from?

Do they sound
the same depending
on which ear you use?



daytime



What kinds of animals do you see during the day?

Where do they go?

What do they eat?

How might they be the same but also different?

ello

nighttime



How do colors change at night?

Where do you think animals go at night?



touch

Grab two leaves.
Describe how they
feel. How are they the
same or different?

How does the
ground feel? Is
it hot or cold?
Why?



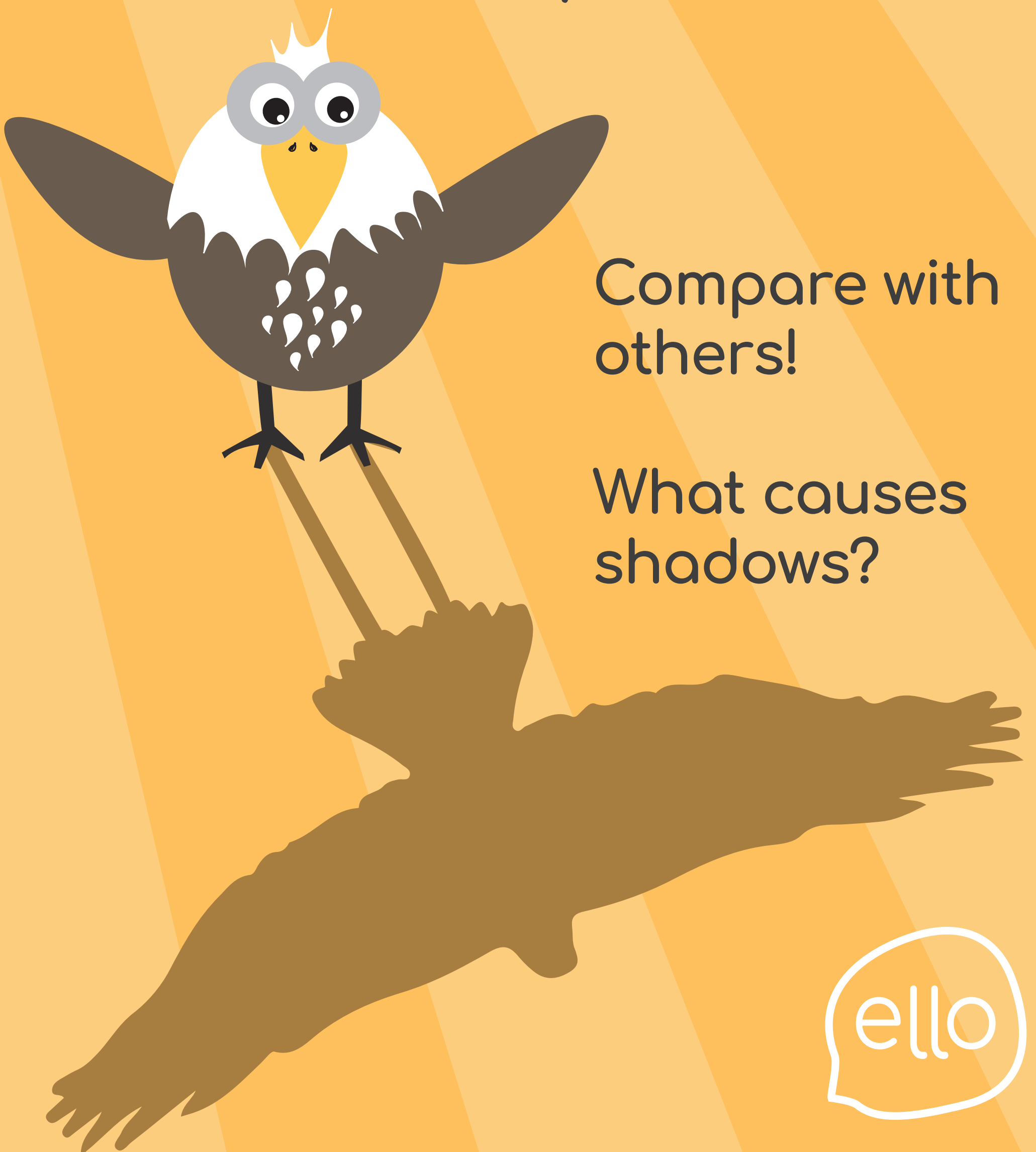
light & shadow

How do they work?

Where do the shadows fall?
Why is that?

Where will shadows
fall later today?

How large can you
cast your shadow?



Compare with
others!

What causes
shadows?



observe

What shapes can you identify in the clouds?

How are clouds formed?

How many different plants and leaves can you observe?

What is the function of plant leaves?



seasons

What are the characteristics of the four seasons?

What evidence can you find to tell you what season it is?



ello

patterns

Did you know patterns occur often in nature?

Pick a shape and then see how many more of that shape you can discover!

I spy with my eagle eye...



environment

If you were an animal or insect that lived here, where would you find shelter?

What are the properties of an effective shelter?



nature

What does a plant need to grow?

Do all plants need the same things? Why?

What do you need to grow?

